



Versione CHIAVE - CHIAVE

FINITURA DI SERIE

- Corpo e Cilindretti OLV

DOTAZIONE

- 5 Chiavi cifrate
- Vite di fissaggio
- Carta di proprietà

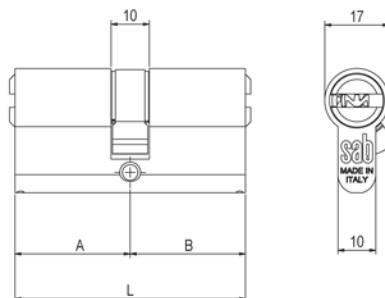
KEY - KEY Type

STANDARD FINISHINGS

- Body & key rotor OLV

ACCESSORIES

- 5 Coded keys
- Fixing screw
- Registration card



Serie
HR

HR Versione CHIAVE - CHIAVE
KEY - KEY Type

Codice Code	Finitura Finishing		L	A	B		
HR 3030	---		60		30		
HR 3035	---		65		35		
HR 3040	---		70	30	40		
HR 3045	---		75		45		
HR 3050	---		80		50		
HR 3060	---		90		60		
HR 3070	---		100		70		
HR 3535	---	6	70		35	1	50
HR 3540	---		75	35	40		
HR 3545	---		80		45		
HR 3550	---		85		50		
HR 4040	---		80		40		
HR 4045	---		85	40	45		
HR 4050	---		90		50		
HR 4545	---		90	45	45		
HR 5050	---		100	50	50		

Impianti Speciali
Master Key Systems

- KA**
- CK**
- MK**
- GMK**
- GGMK**

Finiture Standard | Standard Finishings

Finiture Speciali | Special Finishings

- | | | | | | | |
|-----|-----|-------------------|-------------------|------------|-----|-------------------|
| OLV | OSO | OCL
OCS
ONS | OBO
OGR
OGM | ONC
BLK | PLO | PVD
PVG
PRS |
|-----|-----|-------------------|-------------------|------------|-----|-------------------|

Cilindri di sicurezza | Chiave piatta reversibile
Security cylinder | Reversible flat key

